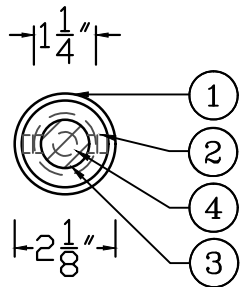
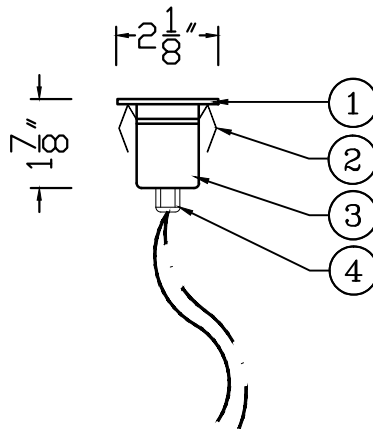


MARINER LIGHT
FLUSH MOUNTING RECESSED LIGHT



TOP VIEW



SIDE VIEW

FIXTURE KEYNOTES

1. SEALED LAMP W/ CLEAR/FROSTED LENS.
2. SPRING LOADED MOUNTING TABS.
3. WEATHER-PROOF STAINLESS STEEL SEALED HOUSING.
4. 20' PRE-INSTALLED LEAD W/ DUAL COLOR, POLARITY SAFE WIRE. MULTI-LEAD CAPABLE.

SCALE: 3"=1'-0"

SPECIFICATIONS

CONSTRUCTION:	STAINLESS STEEL	VOLTAGE:	12V
FINISH:	SMOOTH	LENS:	CLEAR, FROSTED, REMOVABLE
LAMP:	LED, TRUE COLOR, SEALED	MOUNTING:	RECESSED
LUMENS:	200	EXCLUSIVE WIRE:	STANDARD 2-WIRE
BEAM SPREAD:	360°		
LAMP LIFE:	40,000 HRS	APPLICATIONS:	HARDSACPE, STONE, DECKS, PAVERS, OVERHEAD
DESCRIPTION:	SURFACE/RECESSED LIGHT		

PRODUCT: MARINER

LIFETIME LIGHTING SYSTEMS

280 TRADE STREET-UNIT B
SAN MARCOS, CA 92078
P-(760)304-8183

SEE LL0.08 FOR ORDERING

MODEL #

WWW.LIFETIMELIGHTINGSYSTEMS.COM