



PROJECT	DATE
TYPE	CATALOG #

ARCHITECTURAL LED TAPE LIGHT (12V AC)

DAMP LOCATION - OUTDOOR (IP65)

LED-OT-1.5W

Our Architectural LED Tape is now designed to be used with existing 12V AC landscape transformers without the use of a dedicated driver or converter. Architectural LED Tape is used under stairs, steps, toe kicks, counters, cabinets, bars, coves, overhead soffits, etc. Each roll comes with 3 ft. leads on each side of the roll and is field cuttable. Use our optional channels, lenses and connectors to create the perfect custom installation. (Also works with 12V DC power)



MODEL	KELVIN	WATTAGE	LUMENS	IP RATING	MAX RUN
LED-OT-1.5W	2700K 3000K	1.5W/FT	114lm/ft 120lm/ft	IP65	32.8 FT*

KEY FEATURES

- FIELD CUTTABLE LED (EVERY 2")
- 120° VIEWING ANGLE
- UV RATED EPOXY SILICONE COATING (IP65)
- EVEN LIGHT DISTRIBUTION
- 3M MOUNTING TAPE
- 300 LEDS PER ROLL
- 3 FT LEADS ON BOTH ENDS
- FULLY DIMMABLE*

PRODUCT SPECIFICATIONS

- DIMENSIONS** 3/8" W X 16.4 FT ROLL
- WATTAGE** 1.5W PER FOOT (24W PER ROLL)
- IP RATING** IP65 (DAMP RATED)
- MAX RUN** 32.8 FT
- VOLTAGE** 11-13V AC/DC
- DIMMABLE** YES* (SEE INSTALLATION GUIDELINES)
- LEAD WIRE** 3 FT LEADS ON EACH END OF ROLL

LED CHANNEL AND LENS OPTIONS

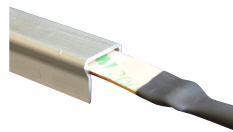
EZ Channel is best for slim profile installs in which there is no need for a lens cover.



EZ CHANNEL

MODEL	LED TCH A
DIMENSIONS	1/2"W X 1/8"H
MATERIAL	ALUMINUM
LENGTHS	48" PIECES

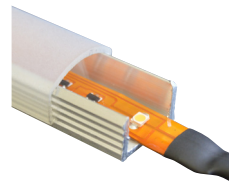
Glare Control Channel gives you added glare protection for multi level LED tape installs.



GLARE CONTROL CHANNEL

MODEL	LED TCH L
DIMENSIONS	1/2"W X 3/8"H
MATERIAL	ALUMINUM
LENGTHS	48" PIECES

Pro Channel & Lens is best for installs where a diffuser lens is needed. Simply adjust the lens to different levels.



PRO CHANNEL & LENS*

MODEL	LED TCH 369
LENS MODEL	LED TCH FROST
DIMENSIONS	3/4"W X 1/2"H
MATERIAL	ALUMINUM
LENS MATERIAL	FROST ACRYLIC
LENGTHS	48" PIECES
*OPTIONAL LENS	

Slim Profile Channel & Lens is best for slim profile installs where a heavy diffuser lens is needed.



SLIM PROFILE CHANNEL & LENS**

MODEL	LED TCH SL
DIMENSIONS	11/16"W X 5/16"H
MATERIAL	ALUMINUM
LENS MATERIAL	OPAQUE ACRYLIC
LENGTHS	48" PIECES

**LENS INCLUDED
(EACH SET INCLUDES: 2 ENDS, 3 MOUNTING CLIPS & 3 SCREWS)



PROJECT	DATE
TYPE	CATALOG #

SNAP-ON CONNECTORS

INDOOR/OUTDOOR RATED

Our Snap-On connectors are designed to easily connect additional power leads, jumpers and for joining 2 rolls together. The connectors do not require soldering; simply cut at the designated marks and snap-on.

LED POWER LEAD

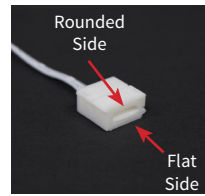
LED-PWR-WL-10MM

The LED Power Lead adds power to the LED tape without factory lead after the initial 2 factory installed leads on the LED tape have been used.

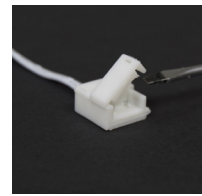


PRODUCT SPECIFICATIONS

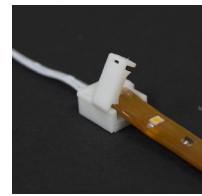
DIMENSION 5/8"W X 5/8"H X 3 FT LEAD
LEAD WIRE 3 FT



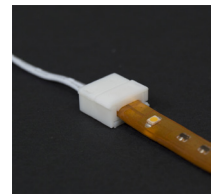
Rounded side opens up. Flat side has tiny prongs. Place LED tape with 3M portion facing flat side.



Use a thin flat head screwdriver to gently open the end connector.



Place LED tape pressing slightly onto prongs. Small puncture holes will appear in the LED tape.



Press down on connector until it clicks. Test the LED tape to make sure a secure contact is made.

NOTE: Two contact prongs pierce oval shape contact points on LED strip.

LED IN-LINE JUMPER

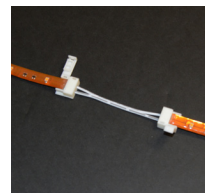
LED-IL-JUMPER-10MM

The LED In-Line Jumper gives you the ability to create designs with a wide range of turns on one continuous run. (Max run: 32.8 ft for 0.75W & 1.5W models; 16.4 ft for 4.5W model)



PRODUCT SPECIFICATIONS

DIMENSION 5/8"W X 5/8"H X 3" JUMPER
 X 5/8"W X 5/8"H



1. Make sure that both LED strips are placed with the 3M side facing the prongs.
2. Press down on both connectors until they click. Test the LED tape to make sure a secure contact is made.



Note: Jumper can be shortened in the field using a small zip tie to accommodate smaller spaces.

NOTE: Two contact prongs pierce oval shape contact points on LED strip.

LED IN-LINE COUPLER

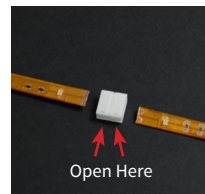
LED-IL-CONN-10MM

The LED In-Line Coupler lets you join 2 LED strips together. (Max run: 32.8 ft for 0.75W & 1.5W models; 16.4 ft for 4.5W model)

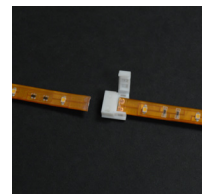


PRODUCT SPECIFICATIONS

DIMENSION 5/8"W X 5/8"H



Set up your 2 strips as noted in the picture above.



Press down on both connectors until they click.



Test the LED tape to make sure a secure contact is made.

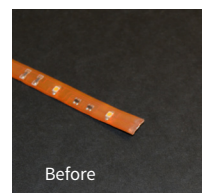
NOTE: Two contact prongs pierce oval shape contact points on LED strip.

PRO INSTALL TIP:

SEALING THE ENDS

While not necessary, for added protection we recommend you seal the ends that are not using connectors, with heat shrink.

(SEE PICTURES)





PROJECT	DATE
TYPE	CATALOG #

SUBMITTAL SHEET

STEP 1

FIXTURE CONFIGURATION

OF ROLLS

	LED-OT-1.5W	
--	--------------------	--

KELVIN OPTION

27K 2700K

30K 3000K

LED Tape is sold in 16.4 ft rolls

INSTALLATION GUIDELINES

MAX RUN INFORMATION

LED-OT-1.5W has a max run of 32.8 ft per dedicated run. Exceeding this length will void any factory warranty.

INSTALLATION NOTES: For outdoor applications, do not install the LED tape with the surface facing up. The LED tape is not submersible and should not be installed near salt water or chemicals. Do not use near water with chemicals such as chlorine. Needs to be placed 10 ft. from water. Installing it without following these guidelines will void factory warranty. (Contact factory for details)

MOUNTING INSTALLATION: We recommend using additional adhesive specific to the surface you are adhering the LED tape to.

***PRIMARY SIDE DIMMING:** Requires LED magnetic low voltage (MLV) or LED electronic low voltage (ELV) dimmable transformer and compatible LED dimmer (MLV OR ELV) For more information see installation guidelines + Fully tested with Lutron Diva (DVLV-600P) dimmer and Lightcraft dimmable transformers.

STEP 2

TRACK & LENS CONFIGURATION

QTY	CHANNEL	LENS OPTION*
	LED-TCH	

MODEL

LED-TCH-A-48 EZ CHANNEL - 48"

LED-TCH-L-48 GLARE CONTROL CHANNEL - 48"

LED-TCH-369-48 DEEP PRO CHANNEL - 48"

LED-TCH-FROST-48 FROST LENS FOR DEEP PRO CHANNEL - 48" (Optional for **LED-TCH-369-48**)

LED-TCH-SL-48 SLIM PROFILE CHANNEL & LENS - 48" SET (Lens, Mounting Clips & Screws Included)

*Lens Option - Specify **LED-TCH-FROST-48** if needed for **LED-TCH-369-48** Channel

LED-TCH-SL-48 - Sold in a set of Channel & Lens

STEP 3

SNAP-ON CONNECTOR OPTIONS

QTY	MODEL
	LED-PWR-WL-10MM

LED Power Lead - 3 ft. Lead

QTY	MODEL
	LED-IL-CONN-10MM

LED In-Line Connector

QTY	MODEL
	LED-IL-JUMPER-10MM

LED In-Line Jumper - 3 in. Jumper

QTY	MODEL
ft.	LED-SHRINK-SM-BK

Heat Shrink - Black - Sold by the foot